



EduBioMed

Co-funded by the
Erasmus+ Programme
of the European Union



Preservation and valorization of resources: the social economy Case of the Intercontinental Biosphere Reserve of the Mediterranean

Prepared by

SOUKAINA BOUZIANI

Supervised by

Prof. Attouch Hicham, FSJES – UM5R

Mme Sonia ADERGHAL

Tetouan Tourism Delegation

The Intercontinental Biosphere Reserve of the Mediterranean

The Mediterranean Intercontinental Biosphere Reserve (RBIM) is a transboundary biosphere reserve located between southern Spain and northern Morocco recognized by Unesco on 25 October 2006.

La réserve de biosphère intercontinentale de la méditerranée



The reserve is located at the Strait of Gibraltar and incorporates part of the Mediterranean Sea. Thus, it is the first biosphere reserve connecting two countries separated by a sea

The Intercontinental Biosphere Reserve of the Mediterranean

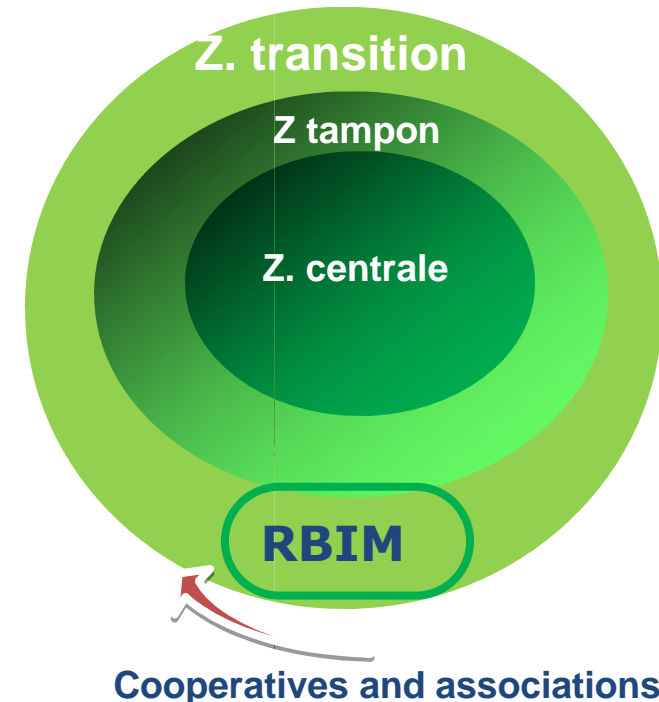
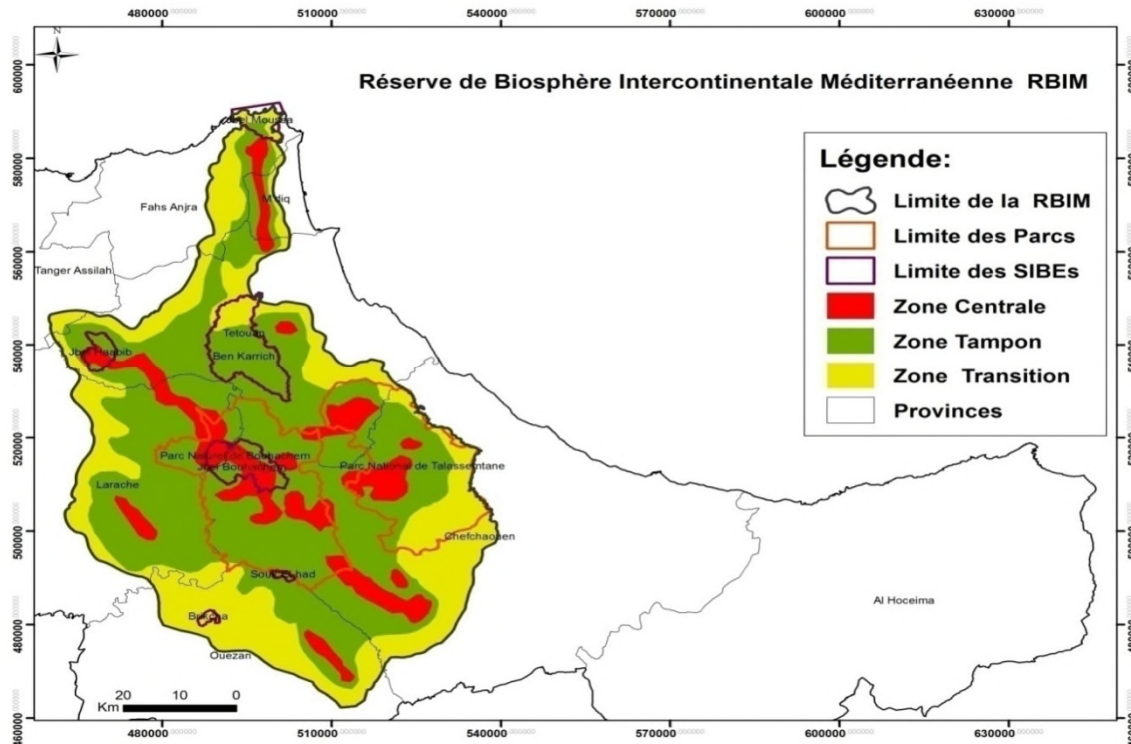
The Mediterranean Intercontinental Biosphere Reserve, recognized by UNESCO as the first biosphere reserve straddling two continents. The area is also home to the Talassemtane National Park and the Bouhachem Natural Park .



Features of the RBIM:

- ✓ Great geological and biological diversity
- ✓ A historical and cultural repository
- ✓ A place of natural and socio-cultural exchange
- ✓ High human potential
- ✓ The great diversity of landscapes and resources having a common trait between the two shores

The Intercontinental Biosphere Reserve of the Mediterranean



The Biosphere Reserve (RBIM) combines three complementary functions:

- Conservation: Contribute to the conservation of landscapes, ecosystems, species and genetic variation ;
- Development: Encouraging socio-cultural and ecological sustainable economic and human development;
- Logistics Support: Provide capacity for demonstration projects and environmental education and training activities, research and ongoing monitoring on local, regional, national and global conservation and sustainable development issues .

The Intercontinental Biosphere Reserve of the Mediterranean and the social economy

Different approaches to SE

The strategy 2010-2020

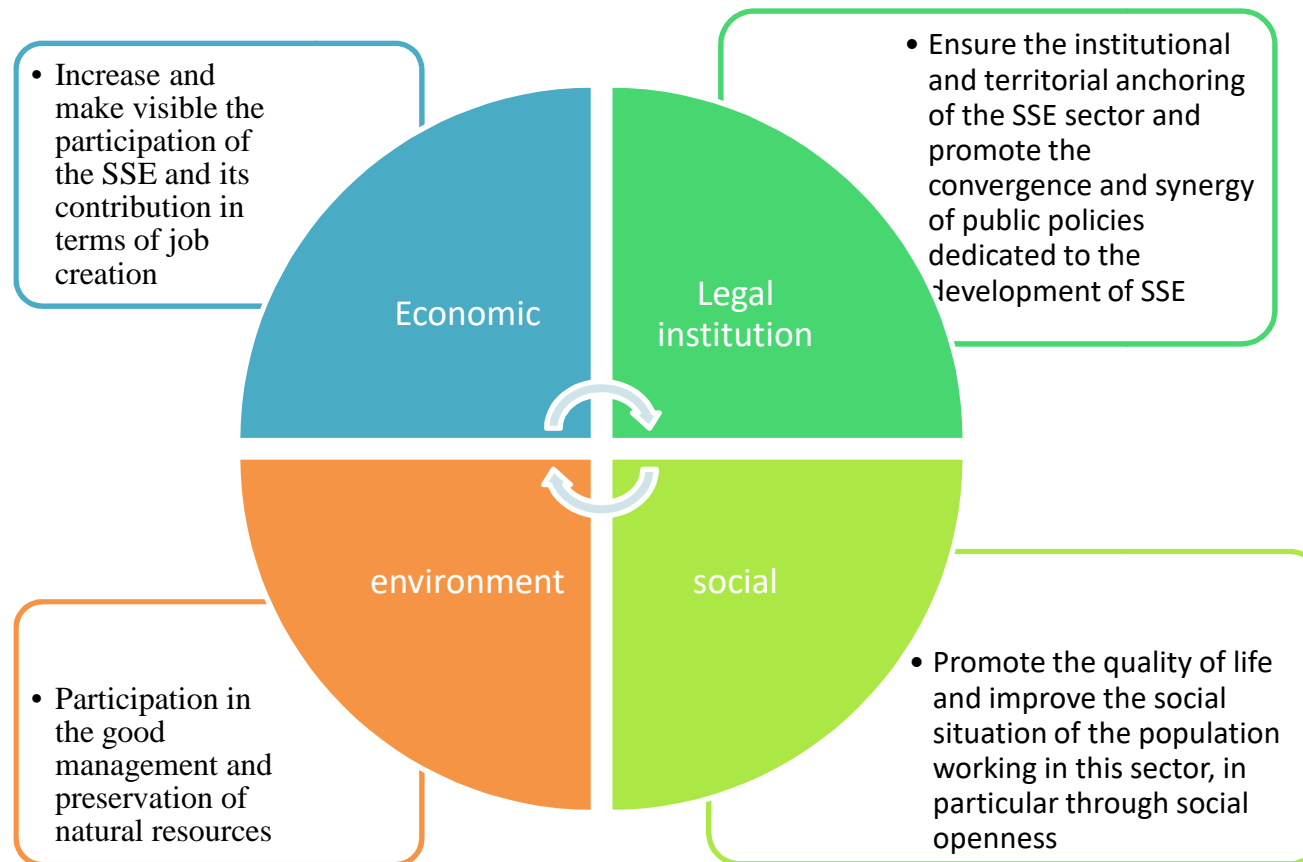
- Strengthen and harmonize public action for the social economy, both at national and regional level ;
- Facilitate the emergence of an efficient and structured social economy capable of playing its role in the fight against poverty, precariousness and exclusion;
- Contribute to an integrated territorial development based on the rational exploitation and valorization of local wealth and potential

SE Actors

- The involvement of the population in the development process
- Boosting local socio-economic development initiatives
- Sensitize the citizen to the protection of the environment
- Develop and promote rural tourism
- Improving the living conditions of the population through sustainable development projects

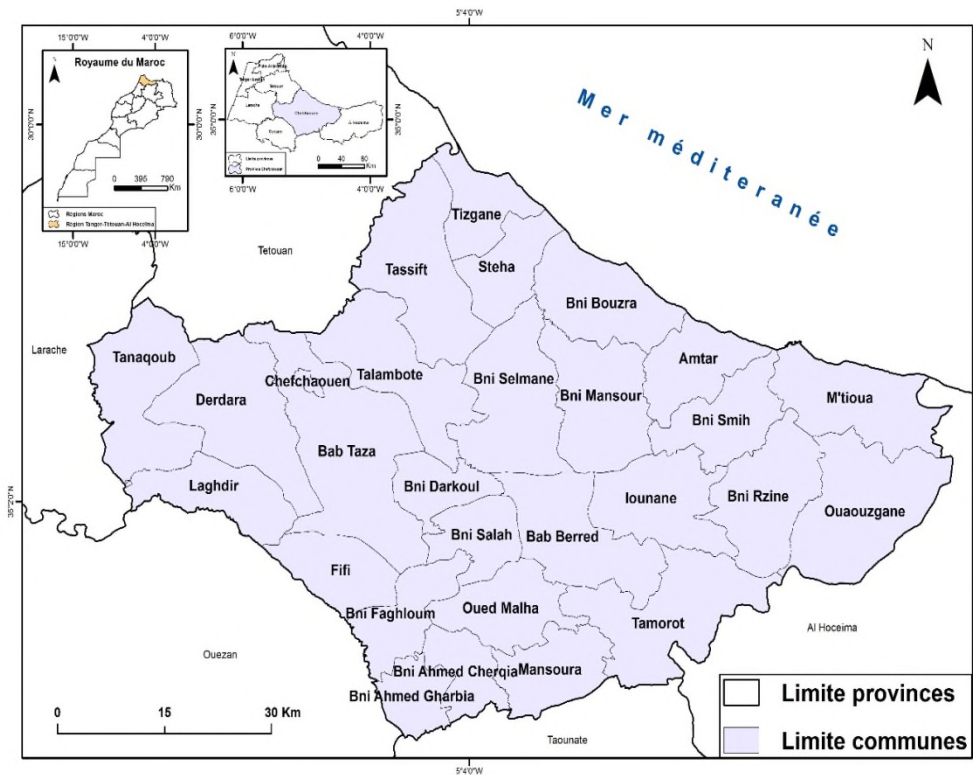
The Mediterranean Intercontinental Biosphere Reserve and the social economy

New National SE Strategy 2018-2028

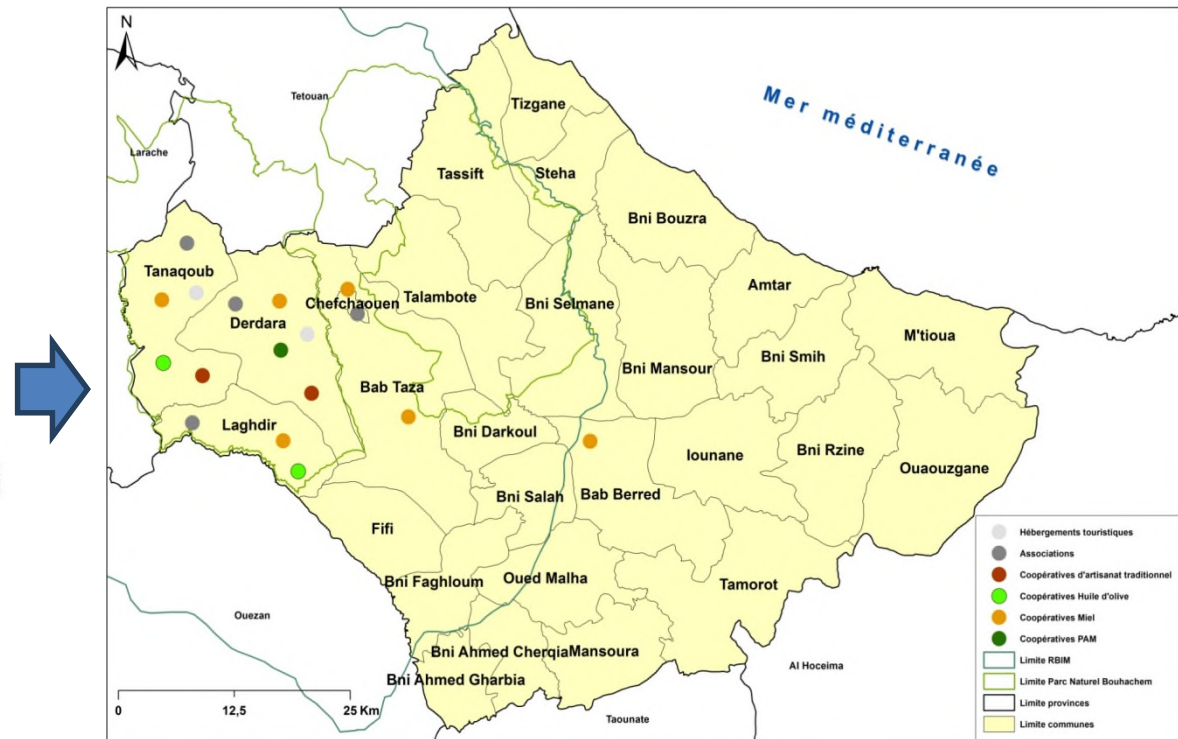


The Mediterranean Intercontinental Biosphere Reserve and the social and solidarity economy

Location of the study area

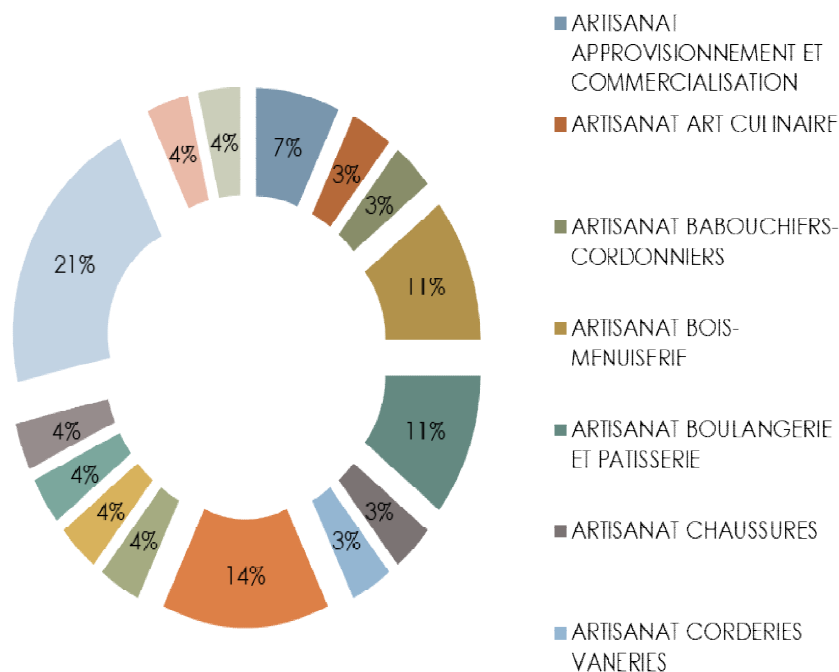


Distribution of RBIM area

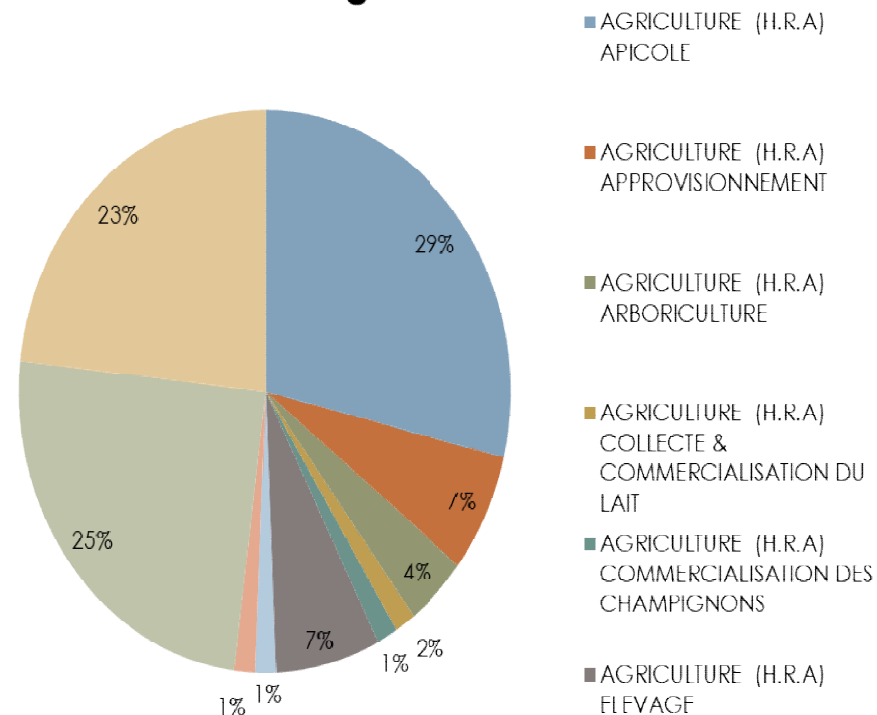


The Mediterranean Intercontinental Biosphere Reserve and the social economy

**Nombre coopératives par secteur
Artisanat**

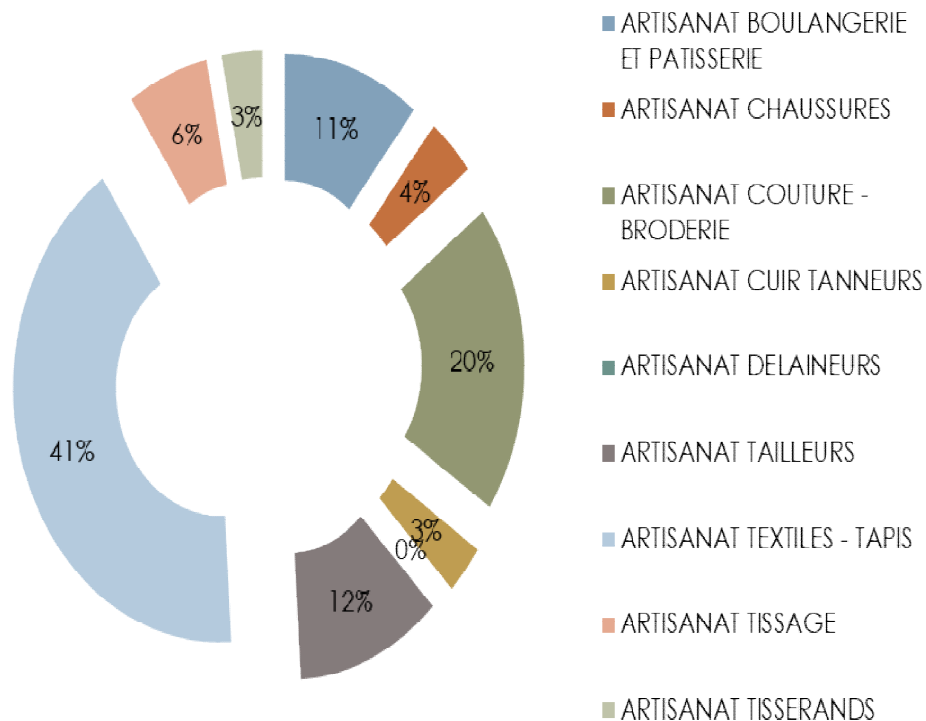


**Nombre Coopératives par secteur
Agriculture**

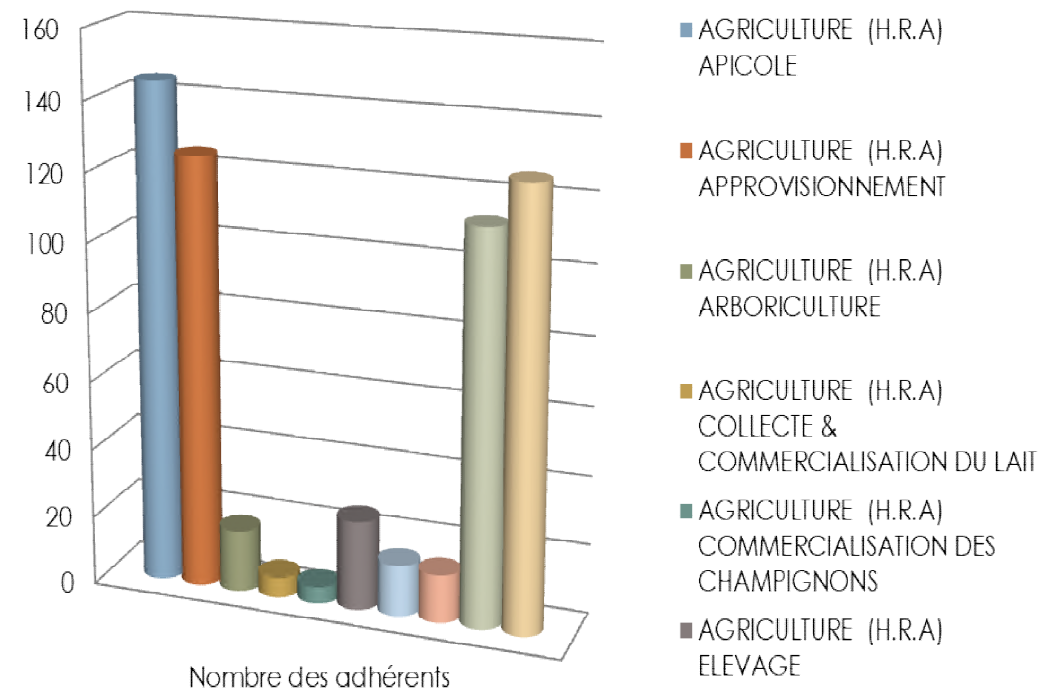


The Mediterranean Intercontinental Biosphere Reserve and the social economy

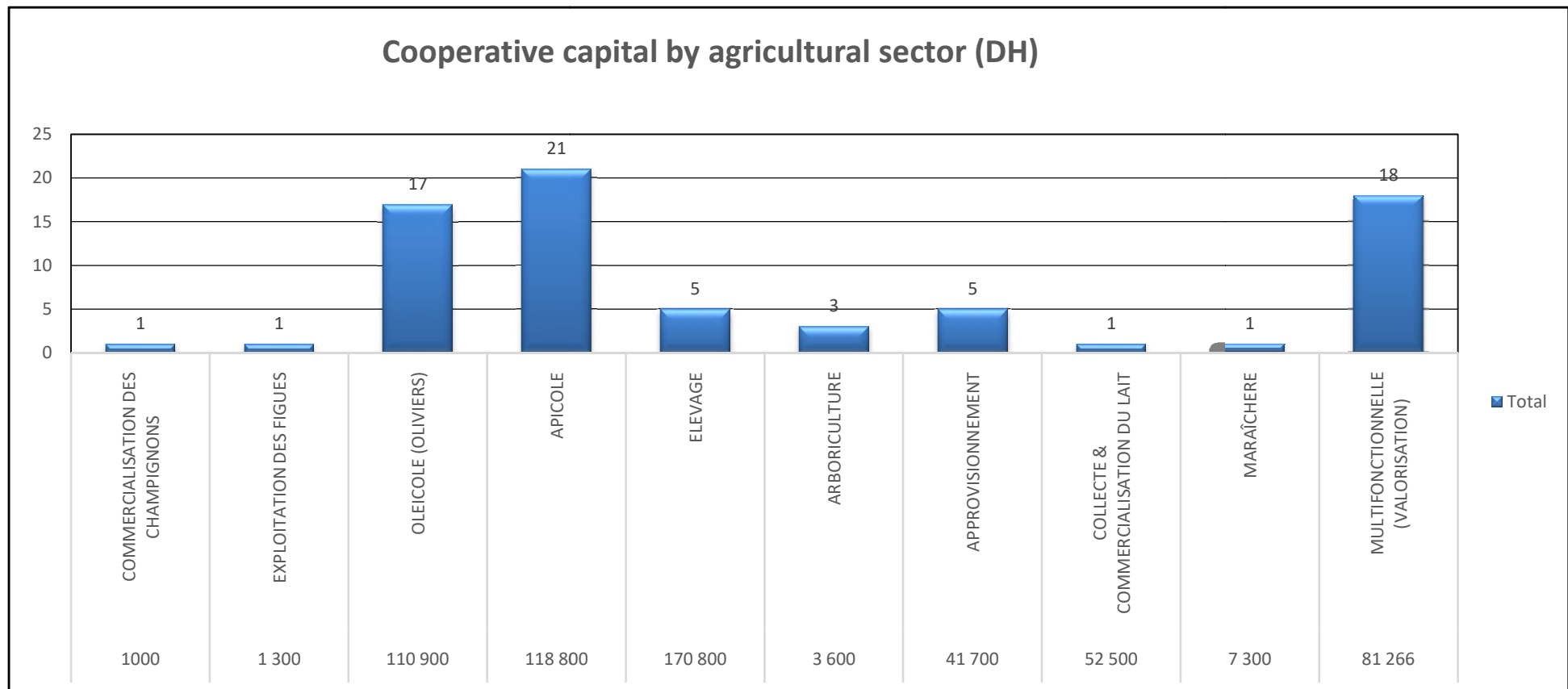
Nombre des adhérents par secteur
Artisanat



Nombre des adhérents par secteur
Agriculture



The Mediterranean Intercontinental Biosphere Reserve and the social economy



Project proposal in the RBIM: Creation of a new label

A label is a protected trade union mark, which certifies that a product has been manufactured in accordance with the working conditions provided for by law or the collective agreement (Jur. 1974). Or is a distinctive mark created by a trade union or an organization semi-public and affixed to a promoted product to guarantee its quality, even compliance with manufacturing standards " (Bern.-Colli Extr. 1976).



The Eco Label - Mab official label is based on specifications drawn up in a participatory manner by students from Med 5 University and experts in the field of SE and the environment. The Eco - Mab Label is made up of two independent organizations: a "communication" pole responsible for highlighting labeled organizations, and a labeling committee responsible for carrying out compliance checks and deciding on the eligibility of structures wishing to get the Label.



Condition I

- Statutes enshrined in the ES Law of July 31, 2014: Association
- Cooperative
- Social enterprise

Condition II

The social enterprise (Association, cooperative) must have as its main objective the search for social utility:

- Support for people in fragile situations;
- The fight against exclusion and inequalities;
- Citizenship Education;
- Preservation and / or development of social ties;
- Maintain and / or strengthen territorial cohesion;
- Contribution to sustainable development in its economic, social, environmental and participatory dimensions;
- Resource management and energy saving;
- Marketing of local products by promoting short circuits and local initiatives;
- Ecological responsibility;
- Encourage short circuits to facilitate access to regional products and offer the guarantee of consuming healthy, quality products that respect the environment;
- The Engaged Market facilitates exchanges between producers and consumers and thus guarantees the short circuit. The label also commits to waste management and the fight against waste;
- Identify retailers who are committed to environmental responsibility, promote new, more sustainable and responsible consumption behaviors.

Project proposal in the RBIM: creation of a new label

Specifications

Nom: Eco-Label, “Economy, Man and biosphere”

Meaning: This label is the official recognition sign of the biosphere, which must produce and consume within the limits of the biosphere (RBIM). It is based on the enhancement of natural resources.

Project proposal in the RBIM: Creation of a new label

Condition III

Democratic governance, defined and organized by the statutes, providing for information and participation, the expression of which is not only linked to their capital contribution or the amount of their financial contribution, partners, employees and stakeholders to company achievements.

Condition IV

- The profits are mainly devoted to the objective of maintaining or developing the activity of the cooperative
- Creation of solidarity between cooperatives
- Education, Awareness of the importance of RBIM's natural resources
- Rational exploitation and production and take into consideration the valuation of RBIM resources

Condition V

- Eco-responsible approaches;
- Transparency

Condition VI

- Territorial anchoring